



THANK YOU FOR YOUR INTEREST

in building a ramp for a community member in need.

Because of you, people like *Tiny, May, and William* can enjoy a better quality of life. When you sign on to build a ramp for a local senior (or individual with a mobility impairment), you are ensuring that the right resources are provided in the right timing for an individual who might otherwise have to go without. It's quite humbling to think that a stack of treated lumber and a few decking screws can, quite literally, save a life. And it's a powerful thing to be part of a community coming together to love its people. **YOU** are truly making a difference!

PROVIDE connection & love

3

Seniors aged 70+ are some of the loneliest in our community, and their needs are often invisible to others. Through the Encouragement program, community members are literally bringing friendship to their front door through one-on-one visits, holiday/birthday celebrations, and nursing home home visits. What a beautiful way to say, "I see you." "You matter."

BRING honor & dignity

4

We have the opportunity to change culture when we value the lives of the young AND the old. Kind at Heart strives to raise awareness of age-related needs, provide an avenue for clients to share their incredible stories, and invite others to participate in meeting their needs.

MOBILIZE the community

5

We are called by God to love and serve our neighbors, and there's nothing quite like watching the local community serve "the least of these" through tangible acts of service. From large groups to small, and from gettin'-dirty work to leading behind a laptop, we can put you to work. There's plenty of work to be done!

about KIND AT HEART

1

PREVENT falls & injuries

We assist individuals with mobility impairments and ensure that their home has the necessary modifications to make it safe and accessible, i.e., wheelchair ramps, grip bars, handicap showers, etc.

2

ASSIST with home repairs

Routine home maintenance and minor repairs can have a serious impact on quality of life for local seniors. But with the help of skilled volunteers, handyman support is being provided at little to no cost for those receiving help through Kind at Heart.

FAQ

for builders, contractors,
& SKILLED VOLUNTEERS

What are the benefits of partnering with KAH on this?

Individuals and businesses who serve their neighbor not only stand out as leaders in the community, they experience the power of teamwork in a unique way. For those with a faith-based lens on the world, vocation becomes ministry

Is there flexibility in finding a time that works best for me or my team?

Yes, we know your time is valuable and will do our best to match you with a ramp building project that is a win-win for both you and the client in need. After all, volunteer skilled workers, contractors, and business owners are a critical piece of ensuring clients' homes are safe & accessible.

What kind of time commitment do I need to make to build a ramp for someone in need?

Due to the location of ramps being built at main entry/exit points of the home, it is critical that we complete a build in the time estimated (typically a 1-2 day build, depending on # of skilled workers). *Please refer to examples for estimated labor hours for various ramps.*

How will my team and/or I be equipped to assist you?

A KAH team member will provide pre-game day support in the form of blueprints, instructions, and a verbal walkthrough of the project. In addition, treated lumber, decking screws, and other ramp-related materials will be provided on-site (unless other arrangements have been made ahead of time). We *do* ask that you utilize personal tools for getting the job done, when possible.

Have questions on build day? A designated KAH team member can be reached by cell phone at the number provided to you beforehand OR or by calling the office at (479) 373-6281.

Are you expecting me to cover the cost of materials, in addition to labor?

While we rely on the generosity of community members to fund ramps & home-related projects, you and/or your team are not expected to pay for materials. If you would like to participate in funding the project, please let us know.

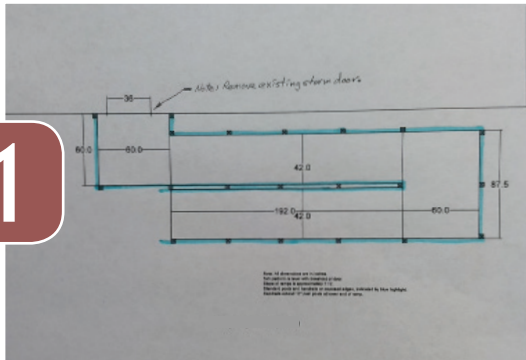
Will you provide me with a tax receipt for deduction purposes?

As a 501(c)3 nonprofit organization, we are able to provide a donation receipt/letter for in-kind goods and/or financial gifts. The value of donated labor, however, is not tax-deductible.

What's next? How do I sign up?

We would love to talk with you and answer any additional questions you have about building a ramp for a neighbor in need. Give us a call at **(479) 373-6281** or send an email to servant@kindatheart.org.

1



Wraparound Ramp

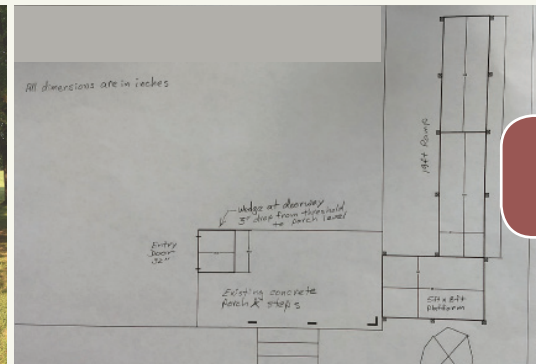
Total Length:
Estimated Materials: \$1033
Estimated Labor: 32 hours
Value of Labor: \$704

Total Cost: \$1737

Ramp with 5x5 Platform

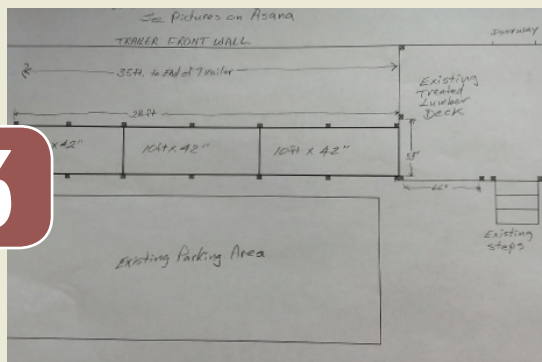
Total Length: 24' + platform
Estimated Materials: \$743
Estimated Labor: 24 hours
Value of Labor: \$528

Total Cost: \$1271



2

3



Straight Ramp

Total Length: 28'
Estimated Materials: \$720
Estimated Labor: 24 hours
Value of Labor: \$528

Total Cost: \$1248



Wraparound Ramp - Tiny

We originally built a ramp for Tiny in 2017, and it proved to be a vital support for his independence. However, the risk of a fire from a wood-burning stove became a reality for Tiny in Winter 2019, leaving his home in an uninhabitable state. While the community came together to help Tiny rebuild, he had no other choice than to move in with his daughter, where a new ramp would be needed. Thankfully, with the help of both a local contractor and a business owner, a temporary ramp was built for him that had the capability of being “recycled” for another Neighbor in need once he returned home.

Ramp with 5x5 platform - May

May has lived in her current home for many years; a space she shares with her disabled son. Fully dependent on a walker to get around, and unable to navigate her front steps, she was slowly becoming trapped in a space she once held sacred. As a personal caregiver for over 30 years, it's been difficult for May to be on the receiving end of things. However, without a ramp, May severely struggled to navigate the space outside her home, tend to her springtime flowers, or join her church family for Sunday morning service. A large ramp enabled May to reclaim her “Home Sweet Home” without risking a catastrophic fall/injury.



Straight Ramp - William

William returned home from rehab following an above-the-knee leg amputation, and quite literally had to drag his body up the steps to his trailer home. Having had open-heart surgery in recent years and suffering other health complications that may be linked to Agent Orange exposure in Vietnam (where he was stationed after the war), this wasn't an option for long!

Like too many of our veterans, however, he lives on a fixed income and works hard to make ends meet. He is so thankful for this community coming together to raise the needed funds and build him a ramp; it improved his quality of life overnight!